

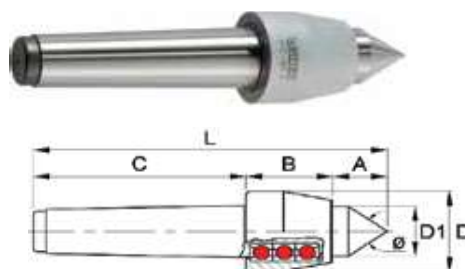


## Light Duty Live Centers

Suitable for high-speed and middle-speed lathe with light load  
Made of heat treated Alloy steel ASTM 4118 hardened to 60HRC  
With Ball bearings assembly



Made in Taiwan



Unit : inch

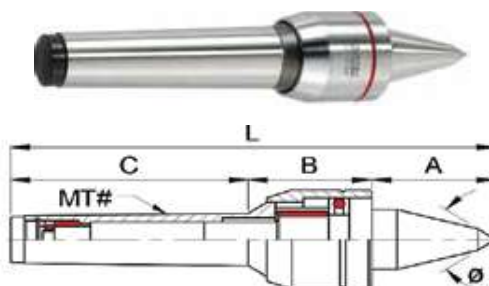
Order No.	Designation	Taper	A	B	C	D	D1	L	$\theta$	Accuracy	Max Speed	Weight
5001-001	VPC-MT1	MT1	0.83	1.22	2.20	1.26	0.63	4.25	60°	0.0002	3200 RPM	0.66lb
5001-002	VPC-MT2	MT2	1.02	1.46	2.72	1.54	0.87	5.20	60°	0.0002	2800 RPM	1.10lb
5001-003	VPC-MT3	MT3	1.26	1.81	3.39	1.77	1.02	6.46	60°	0.0002	2000 RPM	1.98lb
5001-004	VPC-MT4	MT4	1.34	1.81	4.25	1.89	1.18	7.40	60°	0.0002	1800 RPM	2.86lb
5001-005	VPC-MT5	MT5	1.97	2.44	5.35	2.68	1.77	9.76	60°	0.0002	1500 RPM	7.04lb

## Live Lathe Centers

Suitable for high-speed and middle-speed lathe with heavy load  
Made of heat treated Alloy steel ASTM 4118 hardened to 60HRC  
With Ball, needle roller, thrust ball and roller bearings assembly  
Suitable for small workpiece machining



Made in Taiwan

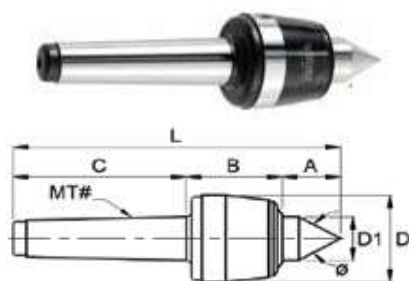


Unit : inch

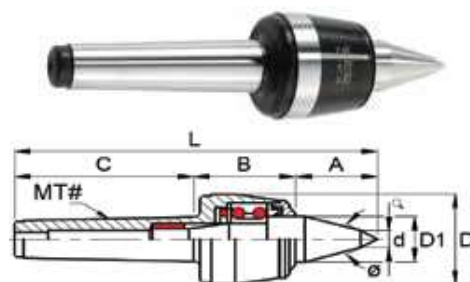
Order No.	Designation	Taper	A	B	C	D	D1	d	L	$\theta$	Accuracy	Max Speed	Weight
5001-014	VLC-213B	MT-3	1.81	1.73	3.39	1.61	0.98	0.39	6.93	60°	0.0002	3,000 RPM	2.0lb
5001-015	VLC-214B	MT-4	2.17	2.00	4.25	1.85	1.26	0.47	8.43	60°	0.0002	2,500 RPM	3.3lb

## High Speed NC Live Centers

Made of SUJ2 material  
Heat treated and hardened to HRC60  
Water proof  
Trust bearing & Needle Roller  
Bearing assembly



A type



B type

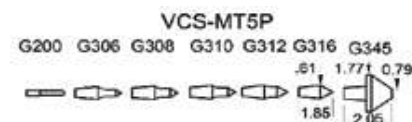
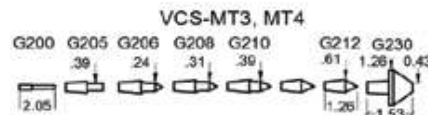
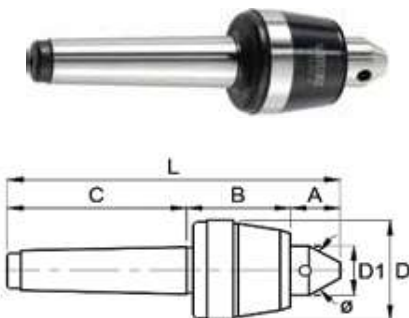
Unit : inch

Order No.	Designation	Taper	A	B	C	D	D1	d	L	$\theta$	Accuracy	Max Speed	Weight
5001-020	VLC-MT3A	MT3	1.54	2.00	3.39	2.09	1.18	N/A	6.93	60°	0.0002	4000 RPM	2.9LB
5001-021	VLC-MT4A	MT4	1.65	2.44	4.25	2.48	1.26	N/A	8.35	60°	0.0002	3000 RPM	4.8LB
5001-022	VLC-MT5A	MT5	2.24	2.80	5.35	3.27	1.58	N/A	10.39	60°	0.0002	2500 RPM	9.9LB
5001-023	VLC-MT6A	MT6	3.15	4.37	7.44	5.04	2.76	N/A	14.96	60°	0.0002	1500 RPM	34.3LB
5001-024	VLC-MT3B	MT3	1.89	2.05	3.39	2.09	1.18	0.39	7.32	60°	0.0002	4000 RPM	3.0LB
5001-025	VLC-MT4B	MT4	2.05	2.44	4.25	2.48	1.26	0.47	8.58	60°	0.0002	3000 RPM	4.8LB
5001-026	VLC-MT5B	MT5	2.64	2.80	5.35	3.27	1.58	0.55	10.79	60°	0.0002	2500 RPM	9.9LB



## High Speed NC Interchangeable Points Live Centers

Suitable for high-speed lathe and NC lathe with heavy load  
 Made of vacuum heat treated Alloy steel ASTM 52100 hardened to 60HRC  
 With dual Ball Bearing, Needle, Thrust ball and needle roller bearings assembly  
 Water-proof

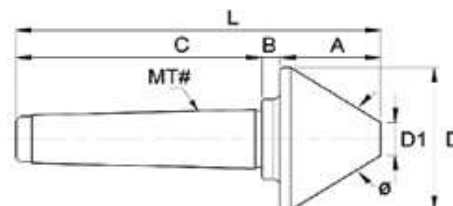


Made in Taiwan

Order No.	Designation	Taper	A	B	C	D	D1	L	θ	Accuracy	Max Speed	Weight
5001-050	VCS-MT3	MT3	1.10	2.00	3.39	2.09	1.18	6.50	60°	0.0003	4,000 RPM	4.0lb
5001-051	VCS-MT4	MT4	1.18	2.44	4.25	2.48	1.26	7.72	60°	0.0003	3,500 RPM	5.5lb
5001-052	VCS-MT5P	MT5	1.34	2.76	5.35	3.27	1.58	9.33	60°	0.0003	2,500 RPM	5.9lb

## Bull Nose Pipe Centers

With roundness of 0.0002"  
 Made of Alloy steel  
 Hardened to 50 HRC



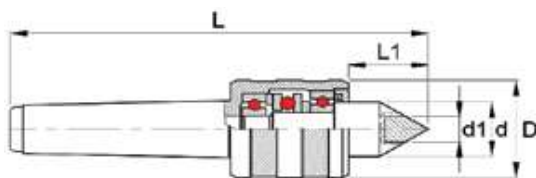
Made in Taiwan

Order No.	Designation	Taper	A	B	C	D	D1	L	θ	Max Speed	Radial Load lbs	Weight
5001-070B	VLC-423	MT2	2.21	0.47	2.72	3.07	0.748	5.43	60°	2500 RPM	880	2.9lb
5001-070C	VLC-424	MT2	2.28	0.47	2.72	4.17	1.26	5.55	70°	2000 RPM	1408	5.0lb
5001-070	VLC-433	MT2	2.05	0.71	3.39	3.07	0.75	6.14	60°	3300 RPM	1800	3.5lb
5001-071	VLC-434	MT3	2.32	0.63	3.39	4.17	1.26	6.34	70°	3000 RPM	1100	6.2lb
5001-071B	VLC-436	MT3	3.19	0.47	3.39	6.14	1.97	7.2	70°	1900 RPM	2640	16lb
5001-073	VLC-444	MT4	2.32	0.63	4.25	4.17	1.26	7.2	70°	3000 RPM	1100	6.8lb
5001-074	VLC-445	MT4	2.87	0.47	4.25	5.04	1.38	7.6	70°	2000 RPM	1430	10.8lb
5001-075	VLC-446	MT4	3.46	0.47	4.25	6.14	1.97	8.19	70°	1900 RPM	1760	17.0lb
5001-077	VLC-455	MT5	2.87	0.47	5.35	5.04	1.38	8.7	70°	2000 RPM	1430	12.8lb
5001-078	VLC-456	MT5	3.46	0.47	5.35	6.14	1.97	9.29	70°	1900 RPM	1760	18.9lb
5001-079	VLC-458	MT5	3.86	0.47	5.35	8.11	2.13	9.69	75°	1500 RPM	3520	34.5lb



## Carbide Tip Live Centers

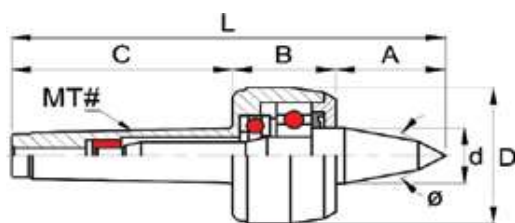
Suitable for high-speed lathe with medium load



Order No.	Taper	L	L1	D	d	d1	Nose Angle	Max. Load	Max Speed	Accuracy
5001-0331	MT-2	5.7"	1.02"	1.6"	0.47"	0.47"	60°	3300lbf	5,000rpm	0.0004"
5001-0332	MT-3	6.7"	1.18"	1.8"	0.59"	0.59"	60°	4400lbf	4,200rpm	0.0004"
5001-0333	MT-4	8.1"	1.37"	1.9"	0.70"	0.71"	60°	7000lbf	3,200rpm	0.0004"
5001-0334	MT-5	10"	1.77"	2.7"	0.94"	0.94"	60°	13860lbf	2,000rpm	0.0006"

## Precision Live Centers

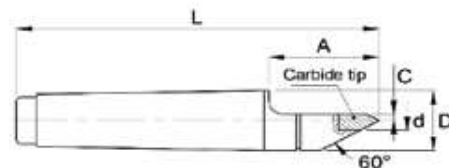
Suitable for high-speed lathe with medium load



Order No.	Taper	L	L1	D	d	Nose Angle	Max Speed	Accuracy
5001-0230	MT-2	5.7"	1.57"	1.6"	0.79"	60°	7,000rpm	0.0002"
5001-0240	MT-3	6.7"	1.89"	1.8"	0.98"	60°	5,000rpm	0.0002"
5001-0250	MT-4	8.1"	2.05"	1.9"	1.26"	60°	3,800rpm	0.0002"
5001-0260	MT-5	10.0"	2.64"	2.7"	1.57"	60°	3,000rpm	0.0002"

## Dead Centers

Half Diameter  
High Precision  
Carbide tipped  
DIN 806



Made in Taiwan

Order No.	Designation	Taper	A	C	D	d	L	Weight
5001-086	VLC-117	MT3	1.61"	0.12"	0.95"	0.35"	4.88"	0.73lb
5001-087	VLC-118	MT4	2.13"	0.16"	1.23"	0.45"	6.22"	1.58lb
5001-088	VLC-119	MT5	2.72"	0.18"	1.79"	0.51"	7.80"	3.80lb

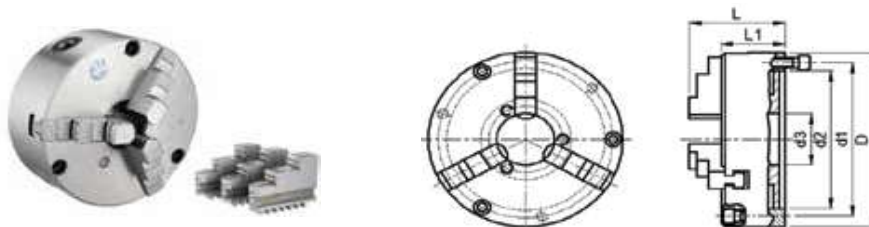


### 3 Jaw Self Centering Chucks

Plain back  
Front mount  
2 sets of solid jaws included



Made in Taiwan



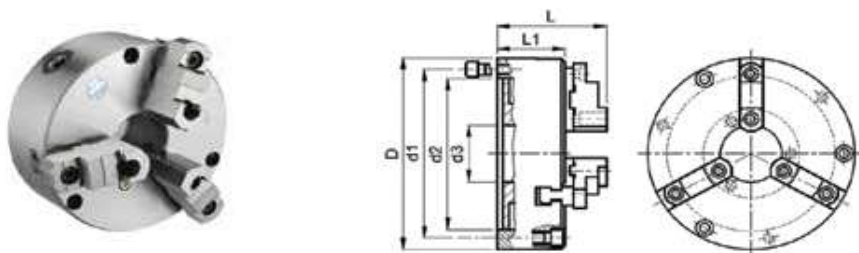
Order No.	Des.	D	d1	d2	d3	L	L1	h	Bolt	Gripping Range		Weight
										ID Range	OD Range	
5002-021A	VSC-4A	4"	3.31	2.83	0.87	2.93	2.17	0.14	3-M8	1.26-3.31	0.12-3.54	7.3lb
5002-022A	VSC-5A	5"	4.53	3.94	1.18	3.07	2.17	0.14	3-M8	1.38-3.94	0.12-4.33	12.8lb
5002-023A	VSC-6A	6"	5.59	5.12	1.77	3.74	2.56	0.20	3-M8	1.89-5.91	0.12-6.3	19.8lb
5002-025A	VSC-8A	8"	7.09	6.50	2.76	4.29	2.95	0.20	3-M10	2.2-6.69	0.16-7.09	34.3lb
5002-027A	VSC-10A	10"	8.90	8.11	3.15	4.72	3.15	0.20	3-M12	2.76-9.84	0.24-8.66	58.3lb
5002-028A	VSC-12A	12"	11.22	10.24	3.94	5.81	3.54	0.24	3-M16	3.39-11.42	0.39-11.81	103.4lb

### 3 Jaw Self Centering Chucks

Reversible Top Jaws  
Front mount



Made in Taiwan



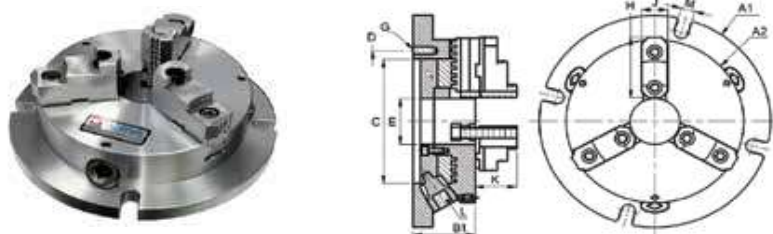
Order No.	Des.	D	d1	d2	d3	L	L1	h	Bolt	Gripping Range		Weight
										ID Range	OD Range	
5002-040A	VSK-6A	6"	5.59	5.12	1.77	3.74	2.80	0.20	3-M8	2.17-5.91	0.315-6.3	18.3lb
5002-042A	VSK-8A	8"	7.09	6.50	2.76	4.29	3.07	0.20	3-M10	2.44-6.69	0.315-7.09	35.2lb
5002-043A	VSK-10A	10"	8.90	8.11	3.15	4.72	3.30	0.20	3-M12	3.15-9.84	0.472-10.24	47.7lb
5002-043B	VSK-12A	12"	11.22	10.24	3.94	5.81	4.04	0.24	3-M16	3.54-11.42	0.59-11.81	90.2lb

### Super Thin Chucks

Power Super Thin Chucks designed to increase the allowable length of machining operation



Made in Taiwan



Unit : mm

Order No.	Designation	A1	A2	B1	B2	C	D	E	F	G	H	J	K	L	M	Gripping Force (kgf)	Weight (kgs)	Gripping Range	
																		O.D. Range	I.D. Range
5002-070	VNBK-6	220	170	58	18	130	147	45	6	3-M10	68	26	40	10	13	1800	12.4	8-180	48-150
5002-071	VNBK-8	270	210	65	20	155	172	60	6	3-M10	82	28	43	11	13	2250	20.2	11-200	62-190
5002-072	VNBK-10	315	255	73	20	190	210	80	6	3-M12	93	32	52	12	16	3150	30.5	12-250	72-240
5002-073	VNBK-12	370	305	80	22	250	285	105	5	3-M12	118	40	59	14	18	3670	46.8	15-300	86-290



## 3-Jaw Wedge Type Thru-hole Power Chuck

Adaptor included  
 Larger bore diameter  
 Adaptor for ASA B5.9 assembled  
 Made of high Alloy Steel  
 All sliding surfaces are hardened and ground

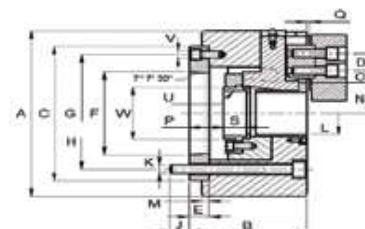
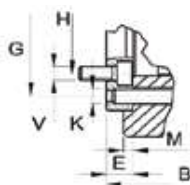
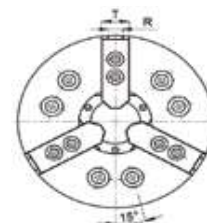


Fig.2

Fig.1

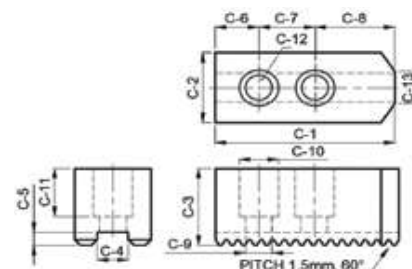
Designation	N-205A4	N-206A5	N-208A5	N-208A6	N-210-A6	N-210A8	N-212A8	N-215A8	N-215A11
Through Hole Diameter (mm)	33	45	52	52	75	75	91	117.5	117.5
Plunger Stroke (kgf)	10	12	16	16	19	19	23	23	23
Jaw Stroke (mm)	5.4	5.5	7.4	7.4	8.8	8.8	10.6	10.6	10.6
Max. Draw Bar Pulling Force (kgf)	1700	2200	3400	3400	4300	4300	5500	7240	7240
Max. Gripping Force (kgf)	3600	5700	8800	8800	11000	11000	14300	18355	18355
Gripping Range (mm)	10-135	13-169	13-210	13-210	30-254	30-254	35-304	35-381	35-381
Max. Operating Pressure (kgf/cm <sup>2</sup> )	29.6	28.5	26.5	26.5	27.5	27.5	27.5	23.5	23.5
Max. Speed	7000	6000	4900	4900	4200	4200	3300	2500	2500
Matching Soft Jaws	VHC05	VHC-06	VHC-08	VHC-10	VHC-10	VHC-12	VHC-12	VHC-15	VHC-12
Matching Hard Jaws	HJ05	HJ06	HJ08	HJ08	HJ10	HJ10	HJ12	HJ15	HJ15
Weight (kg)	6.9	14.2	25.8	24.05	40.9	37.4	63.2	134	127
Order No.	5002-080	5002-081	5002-082	5002-083	5002-084	5002-085	5002-086	5002-087	5002-088

Designation	N-205A4	N-206A5	N-208A5	N-208A6	N-210-A6	N-210A8	N-212A8	N-215A8	N-215A11
A	135	169	210	210	254	254	304	381	381
B	71	91	109	103	120	113	122	160	149
C	110	140	170	170	220	220	220	300	300
D	14	20	25	25	30	30	30	43	43
E	15	15	23	17	25	18	18	33	22
F	65.513	82.563	82.563	106.375	106.375	139.719	139.719	139.719	196.869
H	82.55	104.78	104.78	133.35	133.35	171.45	171.45	171.45	235
J	15.5	16	13	18	18	24	25	24	28
K	3 x M10	3 x M10	3 x M12	3 x M12	3 x M16	3 x M16	3 x M16	3 x M20	3 x M20
L	33	45	52	52	75	75	91	117.5	117.5
M	4	5	5	5	5	5	6	6	6
N max.	26.5	32	38.7	38.7	51	51	61.3	82	82
N min.	23.8	29.25	35	35	46.6	46.6	56	76.7	76.7
O max.	19.75	22.75	29.75	29.75	33.75	33.75	45.75	46.75	46.75
O min.	7.75	9.25	14.75	14.75	14.25	14.25	15.75	13.75	13.75
P max.	16	26	37.5	31.5	33.5	26.5	26	40	29
P min.	6	14	21.5	15.5	14.5	7.5	3	17	6
Q	2	2	2	2	2	2	2	5	5
R	10	12	14	14	16	16	21	24	24
S	20	19	20.5	20.5	25	25	28	43	43
T	23	32	37	37	42	42	52	62	62
U	M40 x 1.5	M55 x 2	M60 x 2	M60 x 2	M85 x 2	M85 x 2	M100 x 2	M130 x 2	M130 x 2
V	3 x M6	3 x M6	3 x M10	3 x M6	3 x M12	3 x M8	3 x M8	3 x M16	3 x M16
W	45	60	66	66	94	94	108	139	139
Fig No.	1	1	2	1	2	1	1	2	1



## Soft Jaws For Power Chucks Standard Length

Suitable for Kitagawa and Japanese (JIS) Standard  
Serration Pitch 1.5 X 60°  
Comes in a pack of 3 pieces  
Material: Steel 5-12 HRC



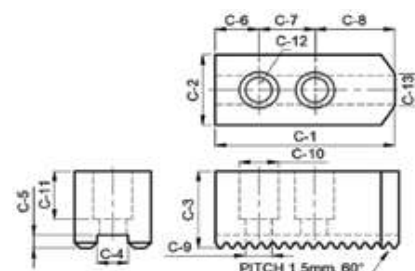
Made in Taiwan

Unit : mm

Order No.	Designation	C1	C2	C3	C4	C5	C6	C7	C8	C9	C10	C11	C12	C13	Weight
5002-330	VHC-05	62	25	30	10	5	9	14	39	13.5	9	21	M8	5	2.0lb
5002-331	VHC-06	73	31	36	12	5	15	20	38	17	11	23	M10	14	3.5lb
5002-332	VHC-08	95	35	37	14	5	24	25	46	19	13	22	M12	16	5.3lb
5002-333	VHC-10	110	40	42	16	5	30	30	50	19	13	27	M12	18	8.2LB
5002-334	VHC-12	130	50	50	21	5	39	30	61	25	17	30	M16	23	14.0LB

## Soft Jaws For Power Chucks Long Length

Suitable for Kitagawa and Japanese (JIS) Standard  
Serration Pitch 1.5 X 60°  
Comes in a pack of 3 pieces  
Material: Steel 5-12 HRC



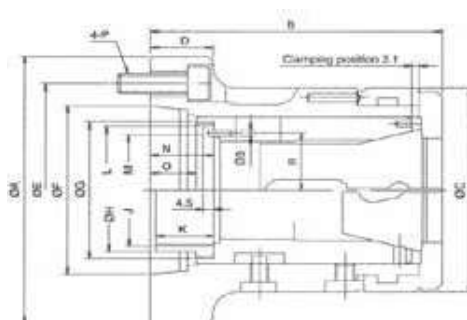
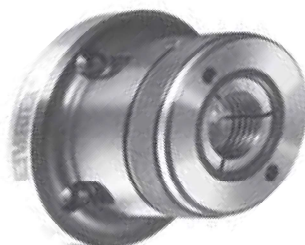
Made in Taiwan

Unit : mm

Order No.	Designation	C1	C2	C3	C4	C5	C6	C7	C8	C9	C10	C11	C12	C13	Weight
5002-3316	VHC-06-6	73	31	60	12	5	15	20	38	17	11	23	M10	14	5.6LB
5002-3326	VHC-08-6	95	35	60	14	5	24	25	46	19	13	22	M12	16	8.2lb
5002-3328	VHC-08-8	95	35	80	14	5	24	25	46	19	13	22	M12	16	10.1LB
5002-3336	VHC-10-6	110	40	60	16	5	30	30	50	19	13	27	M12	18	13.6LB
5002-3338	VHC-10-8	110	40	80	16	5	30	30	50	19	13	27	M12	18	16.0LB
5002-3348	VHC-12-8A	130	50	80	21	5	39	30	61	25	17	30	M16	23	23.8LB

## Lathe Collet Chuck

Spindle : A2-6  
Max Range: 42mm  
Holding Power: 12,320lbf  
Max. speed: 6,000RPM  
DIN6343 Collets



Made in Taiwan

Unit : mm

Order No.	A	B	C	D	E	F	G	H	J	K	L	M	N	O	P	R
5003-041	170	124	100	32	133.4	106.4	M66X1.5	66	M60X2	25	63	54	27	19	M12	28



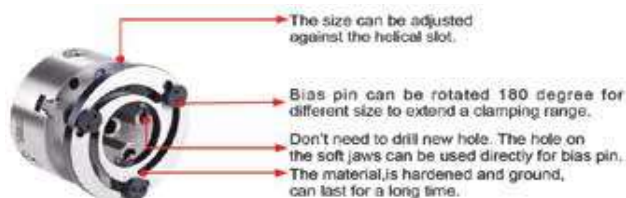


## Soft Jaw Forming Rings

Accurate, Strong and easy to use



Made in Taiwan



Unit : mm

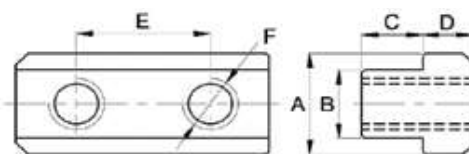
Order No.	Designation	For Chuck	H	D1	D2	S1	S2	G	H1	P	Weight
5002-0360	VFR-05	5"	12	140	60	12	28	10	9	13.5	2.2LB
5002-0361	VFR-06	6"	12	168	80	12	32	10	9	16.5	2.2lb
5002-0362	VFR-08	8"	12	218	115	17	36	10	9	18.5	3.3lb
5002-0363	VFR-10	10"	12	258	150	15	40	10	9	18.5	5.3lb
5002-0364	VFR-12	12"	15	316	188	21	50	10	9	21.5	6.6lb

## T-Nut For Power Chucks

Interchangeable with Kitagawa B-200 series



Made in Taiwan



Unit : mm

Order No.	Designation	For Chuck	A	B	C	D	E	F	Weight
5002-390	B-205T	5"	14	10	9.5	5	14	M8	0.22lb
5002-391	B-206T	6"	17.5	12	11	7.5	20	M10	0.22lb
5002-392	B-208T	8"	20.5	14	12	8.5	25	M12	0.44lb
5002-393	B-210T	10"	22.5	16	13	8.5	30	M12	0.66lb
5002-394	B-212T	12"	28	21	16.5	11.5	30	M16	1.32lb

## Hard Jaws For Power Chucks

Suitable for Kitagawa and Asian (JIS) Standard

Serration Pitch 1.5 X 60°

Comes in a pack of 3 pieces

Hardened 60HRC

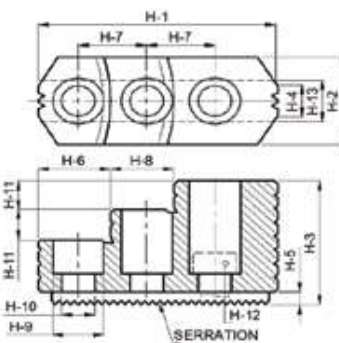


Fig.1

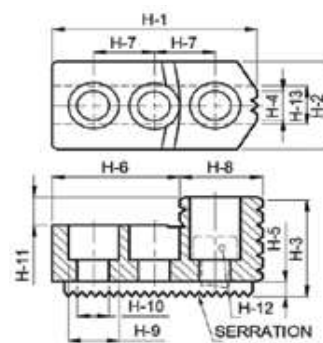


Fig.2

Unit : mm



Made in Taiwan

Order No.	Designation	H1	H2	H3	H4	H5	H6	H7	H8	H9	H10	H11	H12	H13	Fig. #	Weight
5002-401	HJ05	53	23	27.5	10	4	30.5	14	22.5	13.5	8.5	10	M8	6	2	0.9lb
5002-402	HJ06	67.5	31	35	12	5	39.5	20	27.5	17	11	12	M10	16	2	2.2lb
5002-403	HJ08	86	35	51	14	5	31	25	18	19	13	12	M12	12	1	4.2lb
5002-404	HJ10	99.5	40	54	16	5	43	30	17	19	13	13	M12	15	1	6.4lb
5002-405	HJ12	103	50	52	21	4	62.5	30	40.5	25	17	17	M16	30	2	5.8lb