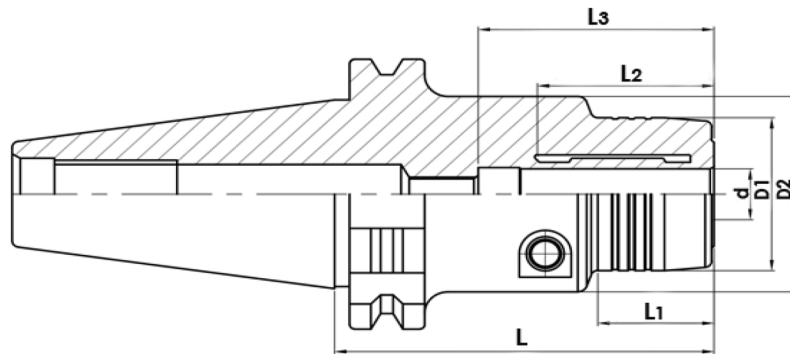




### High Precision Hydraulic Holders

- Made of Special Alloy Steel
- Surface hardened to 58-62 HRC
- Dynamically balanced G2.5 at 25,000RPM
- Runout accuracy < 0.003mm(0.0001")
- High clamping force
- Coolant thru(Flange entry coolant)
- Ideal for applications that require high accuracy
- T Allen key included



Order No.	d	D1	D2	L1	L2	L3	L	Draw bar
3003-1020	1/4	1.20"	1.74"	1.28"	1.34"	1.86"	3.17"	5/8-11
3003-1030	5/16	1.27"	1.74"	1.28"	1.34"	1.86"	3.17"	5/8-11
3003-1040	3/8	1.35"	1.74"	1.28"	1.34"	1.86"	3.17"	5/8-11
3003-1050	1/2	1.42"	1.73"	1.28"	1.34"	2.00"	3.17"	5/8-11
3003-1060	5/8	1.59"	1.73"	1.28"	1.34"	2.00"	3.17"	5/8-11
3003-1070	3/4	1.75"	1.75"	2.40"	N/A	3.15"	3.17"	5/8-11
3003-1080	1"	2.10"	2.51"	1.68"	2.00"	3.35"	4.92"	5/8-11
3003-1090	1.25"	2.37"	2.83"	1.73"	2.00"	3.35"	5.31"	5/8-11
3003-1100	1.50"	2.60"	3.00"	1.73"	2.00"	3.15"	4.92"	5/8-11